

TRUESEAL

U.S. PATENT #5,829,358

Dual Durometer Pneumatic Discharge Gate Gasket

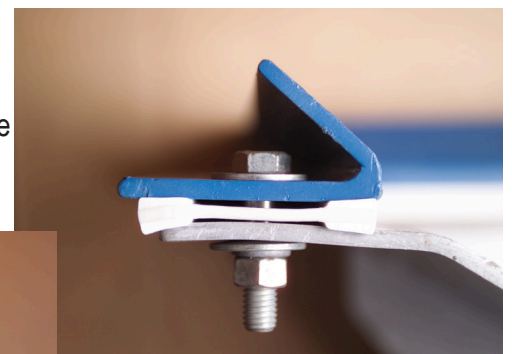
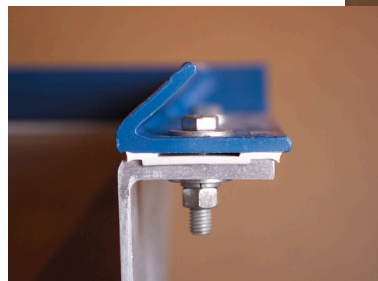


- *Seals completely inside and outside*
- *Prevents entrapment*
- *Bolt torque loss is minimal*
- *Installs easily and correctly every time*
- *Temperature extremes do not affect performance*
- *Profile does not change during load torquing*
- *Gasket retains shape under compression*

CSS's Trueseal gasket seals against the introduction of any foreign matter entering the interior space of the car and gate and thus contaminating the entire load. The gasket works to seal the innermost parts of the flanges such that no plastic materials of a previous load are allowed to become lodged between the gasket surface and either flange after normal cleaning of the car.



The gasket is composed of an inner sealing surface, outer sealing surface and an connector band between the two. When compressed to 30 foot pounds of fastener force the material will ultimately compress down to 3/8 of an inch of overall thickness. The hard PVC band in the gasket does not allow the gasket to protrude inward or outward during compression and the torque loss on the fasteners is held to a minimum.



(Left, and above) **Trueseal** is made of PVC material in two different durometer shores to help prevent protrusion.



110 Industrial Court

Waverly, TN 37185

800.467.0568

Fax 931.296.1944

www.centralsales-service.com